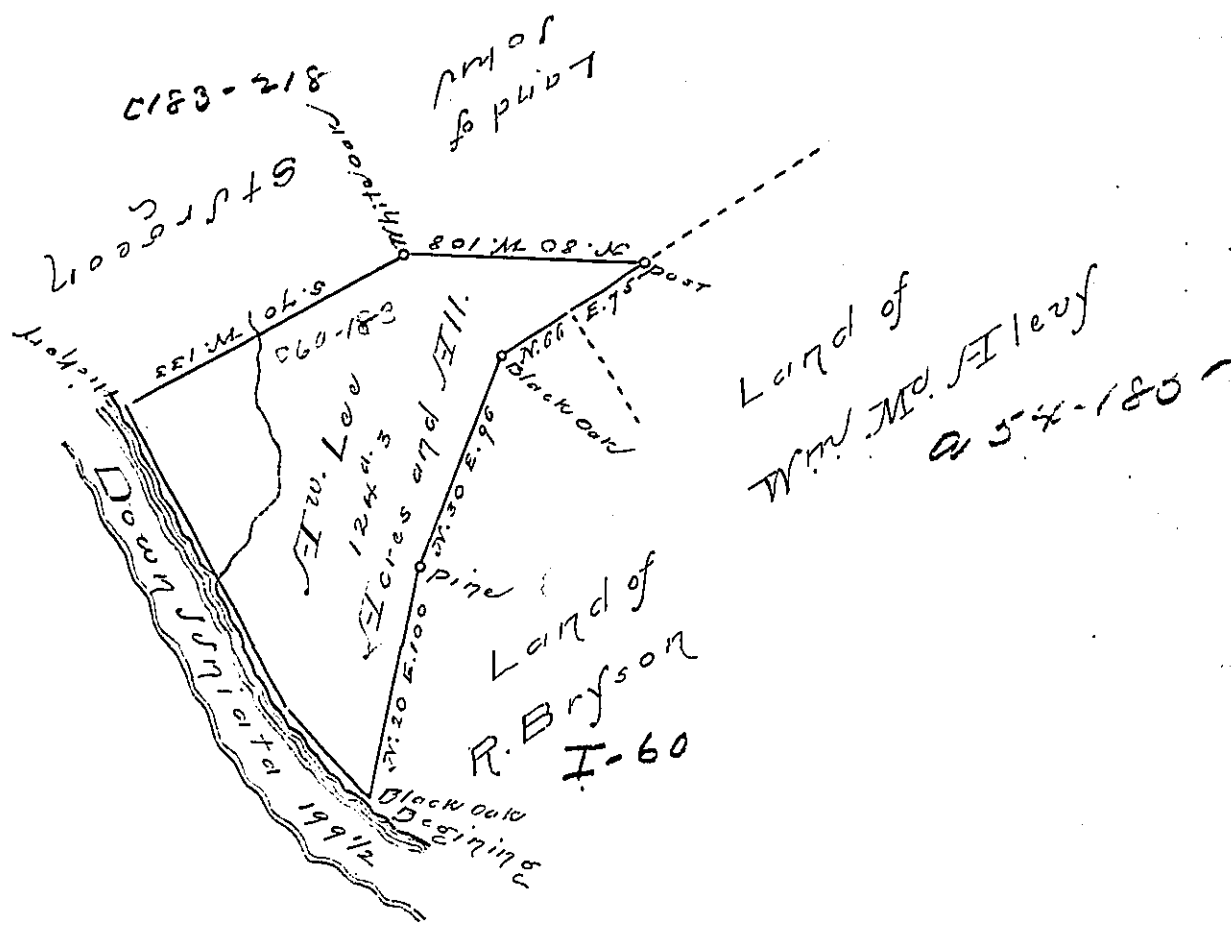


Courses & distances

Down Juniata
 S. 20 E. 142 1/2
 S. 35 E. 57
 199 1/2



This Draught of a Tract of Land called
 Situate on the North side of Juniata in
 Greenwood Township Cumberland County
 containing One hundred Twenty four Acres
 Sixty Two perches with the usual allowance.

Survey'd the 14th day of August Anno
 Dom: 1768 In Pursuance of an Order of
 Survey to Andrew Lee bearing Date at Philad^a
 the 23^d day of February anno. Dom: 1767 and
 numbered 2862.

To

John Lukens Esq. }
 of Pennsylvania

Wm. Maday

IN TESTIMONY that the above is a copy of the original remaining on file in the
 Department of Internal Affairs of Pennsylvania, made con-
 formably to an Act of Assembly approved the 16th day of
 February, 1833. I have hereunto set my Hand and caused
 the Seal of said Department to be affixed at Harrisburg, this

— seventh — day of — April — 1896

James W. Fetter
 Secretary of Internal Affairs.